

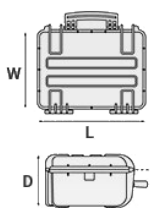
## Mod. 2209.B

### COPOLYMER POLYPROPYLENE WATERPROOF CASE

Compact boxes for valuables and fragile items. High resistance body structure made in PP. Waterproof and crushproof. Resistant to dust and humidity.

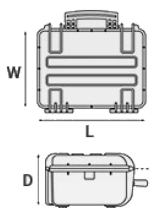


#### METRIC MM-KG-C°



INTERNAL DIMENSIONS		EXTERNAL DIMENSIONS		OTHER DATA	
<b>L</b> LENGTH	220 mm	<b>L</b> LENGTH	246 mm	<b>WEIGHT EMPTY</b>	0.88 Kg
<b>W</b> WIDTH	160 mm	<b>W</b> WIDTH	215 mm	<b>WEIGHT WITH FOAM</b>	0.99 Kg
<b>D</b> DEPTH	95 mm	<b>D</b> DEPTH	112 mm	<b>WEIGHT WITH CUSTOM FOAM</b>	Kg
<b>LID</b>	20 mm			<b>VOLUME</b>	3.30 lt
<b>BASE</b>	75 mm			<b>BUOYANCY</b>	2.30 Kg/max
				<b>OPERATING TEMPERATURE</b>	°C min -33 / max +90

#### IMPERIAL IN-LBS-F°



INTERNAL DIMENSIONS		EXTERNAL DIMENSIONS		OTHER DATA	
<b>L</b> LENGTH	8 11/16 in	<b>L</b> LENGTH	9 11/16 in	<b>WEIGHT EMPTY</b>	1.94 lbs
<b>W</b> WIDTH	6 5/16 in	<b>W</b> WIDTH	8 7/16 in	<b>WEIGHT WITH FOAM</b>	2.18 lbs
<b>D</b> DEPTH	3 3/4 in	<b>D</b> DEPTH	4 7/16 in	<b>WEIGHT WITH CUSTOM FOAM</b>	lbs
<b>LID</b>	13/16 in			<b>VOLUME</b>	0.79 gal
<b>BASE</b>	2 15/16 in			<b>BUOYANCY</b>	5.07 lbs/max
				<b>OPERATING TEMPERATURE</b>	°F min -27.4 / max +194

## FEATURES



**CORROSION PROOF METAL HINGES WITH LID STAY FEATURES**



### **INTERNAL SLOTS**

Internal slots for optional panel mounting brackets or panel mounting rings



### **LATCH**



### **SEALING O-RING**

(Art. NEOSEAL + nr. art.)



### MANUAL PRESSURE RELEASE VALVE

The internal stop ring prevents valve from being completely extracted (Art. PURGEVALVE.B)



### PVC WATERPROOF I. D. REMOVABLE LABEL

(Art. LABELCOVER + nr. art.)



### OPTIONAL SHOULDER STRAP (universal)

(art. SHOULDERKIT.U)

## ACCESSORIES



### PADDED DIVIDER FOR 2209

DIV2209

Padded dividers with internal adjustable partitions. Ideal to protect and transport any kind of sensitive equipment. Thanks to their modularity, they can be easily combined.



### CONVOLUTED FOAM SET FOR CASE 2209 AND 2214

LIDFOAM.22

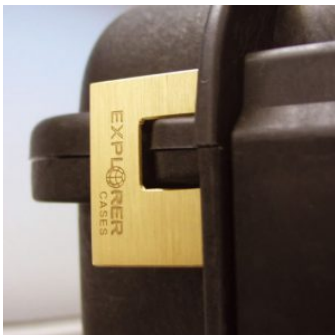
(includes 2 pcs.)



### ADJUSTABLE SHOULDER KIT

SHOULDERKIT.U

The kit is composed by: shoulder strap with plastic endings, 4 threaded knots, 2 metal plates. (min. extension 106 cm, max. extension 201 cm). The strap comes with the Explorer logo. Suitable for models: 1908, 1913, 2209, 2214, 3005, 4412, 4419, 5117, 9413, 11413 and 13513.



### PATENTED HEAVY DUTY BRASS PADLOCK WITH KEYS

EXPL PADLOCK

Designed to fit snug to the Explorer case mould so as not to swing out



### PATENTED COMBINATION PADLOCK

EXPL.COMBILOCK

Designed to fit snug to the Explorer case mould so as not to swing out



### BLIND INSERT

KIT.EXPL.PLUGS

Kit includes 6 pcs. Whenever the slots are not going to be used for in-built applications, those can be closed by blind inserts that will give the case a better and finished interior look.



### TSA APPROVED PADLOCK WITH COMBINATION

EXPL.TSA.DIGILOCK

The new TSA approved padlocks allow tsa® airport security agents to open the case without destroying the lock. TSA agents are trained to recognize the travel sentry certified logo and should not break the case lock.



### METAL BRACKET

KIT.SUPP.EXPL.

Kit includes 6 pcs. All models (except for the 1908) are internally equipped with specific slots, to apply the optional metal or plastic brackets which provide either a panel's fixing points or a fix mechanical joint inside the case, to build more complete applications. This way the case becomes a real workstation, rather than just a carrying container. As the panel mounting brackets are mechanically fixed by screws, they can be removed when necessary. The dedicated screws allow the case to remain waterproof, and help the panels to be removed easily and quickly



### PLASTIC BRACKET

KIT SUPP.PLAST.

Kit includes 6 pcs. All models (except for the 1908) are internally equipped with specific slots, to apply the optional metal or plastic brackets which provide either a panel's fixing points or a fix mechanical joint inside the case, to build more complete applications. This way the case becomes a real workstation, rather than just a carrying container. As the panel mounting brackets are mechanically fixed by screws, they can be removed when necessary. The dedicated screws allow the case to remain waterproof, and help the panels to be removed easily and quickly



### FOAM SET FOR CASE 2209

FOAM.2209

Layers of pre cubed foam for the bottom and convoluted foam for the lid. The pre-cubed foam allows the user to tailor the insert to their own individual requirement. The convoluted foam in the lid helps to firmly keep the stored equipment when the case is closed. Available for 2209 model. Color: dark grey. [DOWNLOAD PDF](#)



## SPARE PARTS



### Polyurethane o-ring seal for models 2209-2214

KIN.0846

Includes: 1 o-ring



### Manual pressure release valve for models 1908-1913-2209-2214-3005

KIN.0525

Includes: 1 black purge valve (+ o-ring + pin) 1 threaded bush 1 snap ring (Seeger)



### Handle for model from 1908 to 2214

KIN.0477

Includes:

1 military green handle  
2 fixing pins



### Handle for model from 1908 to 2214

KIN.0476

Includes:

1 orange handle  
2 fixing pins



**Latch for models from 1908 to 2214**

KIN.0440

Includes:  
1 orange latch  
1 fixing pin



**Latch for models from 1908 to 2214**

KIN.0442

Includes:  
1 black latch  
1 fixing pin



**Name tag holder for models 1908-1913-2209-2214-3005-5140**

KIN.0497

Includes: 1 transparent PP name tag holder



**Latch for models from 1908 to 2214**

KIN.0441

Includes:  
1 military green latch  
1 fixing pin





**Handle for model from 1908 to 2214**

KIN.0478

Includes:

- 1 black handle
- 2 fixing pins